



**India Meteorological Department
(Ministry of Earth Sciences)**

NATIONAL BULLETIN NO. 03 (AS/02/2024)

TIME OF ISSUE: 0930 HOURS IST

DATED: 14.10.2024

FROM: INDIA METEOROLOGICAL DEPARTMENT

(FAX NO. 24643965/24699216/24623220)

**TO: CONTROL ROOM, NDM, MINISTRY OF HOME AFFAIRS (FAX.NO. 23093750)
CONTROL ROOM NDMA (FAX.NO. 26701729)
CABINET SECRETARIAT (FAX.NO.23012284, 23018638)
PS TO HON'BLE MINISTER FOR S & T AND EARTH SCIENCES (FAX NO.23316745)
SECRETARY, MOES (FAX NO. 24629777)
H.Q. (INTEGRATED DEFENCE STAFF AND CDS) (FAX NO. 23005137/23005147)
DIRECTOR GENERAL, DOORDARSHAN (23385843)
DIRECTOR GENERAL, AIR (23421105, 23421219)
PIB MOES (FAX NO. 23389042)
UNI (FAX NO. 23355841)
D.G. NATIONAL DISASTER RESPONSE FORCE (NDRF) (FAX NO. 26105912, 2436 3260)
DIRECTOR, PUNCTUALITY, INDIAN RAILWAYS (FAX NO. 23388503)
CHIEF SECRETARY, MAHARASHTRA (FAX NO. 022- 22028594)
CHIEF SECRETARY, GUJARAT (FAX NO. 079-23250305)
CHIEF SECRETARY, DAMAN & DIU (FAX NO. 0260-2230775)
CHIEF SECRETARY, DADRA & NAGAR HAVELI (FAX NO. 0260-2645466)
CHIEF SECRETARY, GOA (FAX NO. 0832-2415201)
CHIEF SECRETARY, KARNATAKA (FAX NO. 080-22258913)
CHIEF SECRETARY, KERALA (FAX NO. 0471-2327176)
CHIEF SECRETARY, LAKSHADWEEP (FAX NO. 04896-268124)
CHIEF SECRETARY, TAMIL NADU (FAX NO. 044-25672304)
CHIEF SECRETARY, ANDHRA PRADESH (FAX NO. 0863-2441029)
CHIEF SECRETARY, PUDUCHERRY (FAX NO. 0413-2334145)**

Sub: (A) Depression over central Arabian Sea and (B) Low Pressure Area over southeast Bay of Bengal

(A) Depression over central Arabian Sea

The Depression over central Arabian sea moved slowly west-northwestwards with a speed of 4 kmph during past 6 hours, and lay centred at 0530 hours IST of today, the 14th October, 2024 over the same region near latitude 15.8°N and longitude 64.5°E, about 800 km southeast of Masirah (Oman), 1120 km east of Salalah (Oman) and 1330 km east of Al Ghaidah (Yemen).

It is likely to move west-northwestwards towards Oman coast during next 2 days.

Warnings:

(i) Wind warning:

- Squally wind speed reaching 40-50 kmph gusting to 60 kmph is likely to prevail over central parts of Arabian Sea till 14th October evening and decrease gradually thereafter.
- Squally wind speed reaching 35-45 kmph gusting to 55 kmph is likely to prevail over adjoining central parts of north Arabian Sea till 14th October evening and decrease gradually thereafter.

- Squally weather with wind speed reaching 35-45 kmph gusting to 55 kmph is likely to prevail over adjoining eastcentral Arabian Sea till 14th evening and improve gradually thereafter.
- Squally wind speed reaching 35-45 kmph gusting to 55 kmph is likely to prevail over westcentral Arabian Sea from 14th night till 16th morning and decrease gradually thereafter.

(ii) Sea condition:

- Rough sea conditions is likely to prevail over central parts of Arabian Sea till 14th evening and improve thereafter.
- Rough sea condition is likely over adjoining eastcentral Arabian Sea till 14th evening.
- Rough sea condition is likely to prevail only over westcentral Arabian Sea from 14th night to 16th October morning.

(iii) Fishermen warning:

Fishermen are advised not venture into

- Central and adjoining north Arabian Sea till evening of 14th October.
- Westcentral Arabian Sea till morning of 16th October.

❖ **Impact Expected over Sea area**

- Reduction of visibility over sea area due to sea spray induced by strong wind and heavy rainfall.
- Impact expected for boats, motor boats, smaller ships and trawler used for fishing.

❖ **Action Suggested**

Fishermen are advised not venture into

- Central and adjoining north Arabian Sea till evening of 14th October.
- Westcentral Arabian Sea till morning of 16th October.

(B) Low Pressure Area over southeast Bay of Bengal

Latest observations shows that a low pressure area formed over southeast Bay of Bengal at 0530 hrs IST of today, the 14th October 2024. it is likely to become well marked low pressure area and move west-northwestwards towards north Tamil Nadu, Puducherry and adjoining south Andhra Pradesh coasts during next 2 days.

Warnings:

(i) Rainfall Warning:

Tamil Nadu: Light to moderate rainfall over most places with heavy to very heavy rainfall at isolated places is likely on 14th & 15th and 17th and heavy to very heavy rainfall at a few places with extremely heavy rainfall at isolated places is likely on 16th October.

Andhra Pradesh: Light to moderate rainfall over most places with heavy rainfall at isolated places is likely on 14th & 17th and heavy to very heavy rainfall at a few places on 15th & 16th October.

Light to moderate rainfall over most places with heavy to very heavy rainfall at a few places with extremely heavy rainfall at isolated places is likely over south coastal Andhra Pradesh on 16th and heavy to very heavy rainfall at a few places on 17th October.

(ii) Wind Warning:

Squally weather with wind speed reaching 35-45 kmph gusting 55 kmph is likely to prevail over southeast and adjoining central Bay of Bengal till 15th evening. It is likely to increase becoming squally wind speed reaching 40-50 kmph gusting to 60 kmph till morning of 17th October and decrease gradually thereafter.

Squally wind speed reaching 35-45 kmph gusting to 55 kmph is prevailing over southwest and adjoining westcentral Bay of Bengal. It is likely to become 40-50 kmph gusting to 60 kmph from 15th evening till 17th October and decrease gradually thereafter.

Squally wind speed reaching 35-45 kmph gusting 55 kmph is likely along and off north Tamil Nadu and south Andhra Pradesh coasts from morning of 15th October. It is likely to increase becoming squally wind speed reaching 40-50 kmph gusting to 60 kmph till 17th October and decrease gradually thereafter.

(iii) Sea Condition:

Moderate to Rough Sea condition is likely to prevail over southeast and adjoining central Bay of Bengal till 15th evening. It is likely to become Rough Sea condition till morning of 17th October and improve gradually thereafter.

Moderate to Rough Sea condition is prevailing over southwest and adjoining westcentral Bay of Bengal. It is likely to become Rough Sea condition from 15th evening till 17th October and improve gradually thereafter.

Moderate to Rough Sea condition is likely along and off north Tamil Nadu and south Andhra Pradesh coasts from morning of 15th October. It is likely to become Rough Sea condition till 17th October.

(iv) Fishermen Warning:

Fishermen are advised not to venture into

- Southeast and adjoining central Bay of Bengal during 14th to 16th October.
- Southwest and adjoining westcentral Bay of Bengal from 15th to 17th October.
- Fishermen out at sea are advised to return to coasts by evening of today.

❖ Impact Expected [Tamil Nadu (including Chennai) and Andhra Pradesh due to heavy rainfall]

- Localized Flooding of roads, water logging in low lying areas and closure of underpasses mainly in urban areas of the above region.
- Occasional reduction in visibility due to heavy rainfall.
- Disruption of traffic in major cities and roadways due to water logging in roads and poor visibility due to heavy rain leading to increased travel time and incidents
- Likely disruption of marine and inland water transportation like small boats and trawlers.
- Minor damage to kutcha roads.
- Possibilities of damage to vulnerable structure.
- Localized Landslides/Mudslides/landslips/mud slips/land sinks/mud sinks.
- Damage to horticulture and standing crops in some areas due to inundation and wind.
- It may lead to riverine flooding in some river catchments (for riverine flooding please visit Web page of CWC)

❖ Action Suggested [Tamil Nadu and Andhra Pradesh due to heavy rainfall]

- Judicious regulation of surface transports including railways and roadways and onshore/offshore activities.
- Check for traffic congestion on your route before leaving for your destination.
- Follow any traffic advisories that are issued in this regard.
- Avoid going to areas that face the water logging problems often.
- Avoid staying in vulnerable structure.

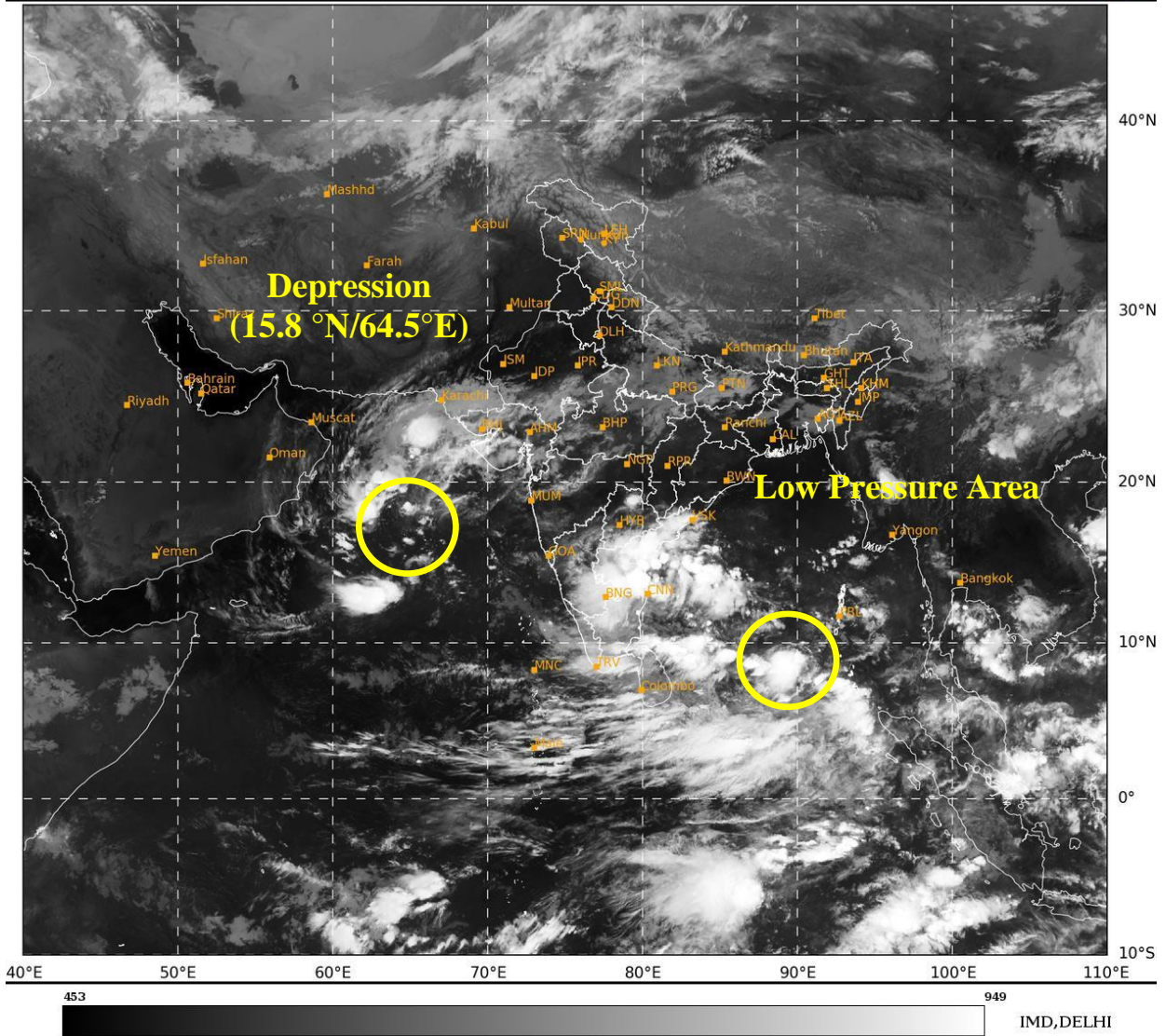
Agromet advisories for Heavy Rainfall

- Provide mechanical support to horticultural crops & staking to vegetables.
- Keep the harvested produce at safer place.

Next bulletin will be issued at 1230 hours IST of today, the 14th October, 2024.

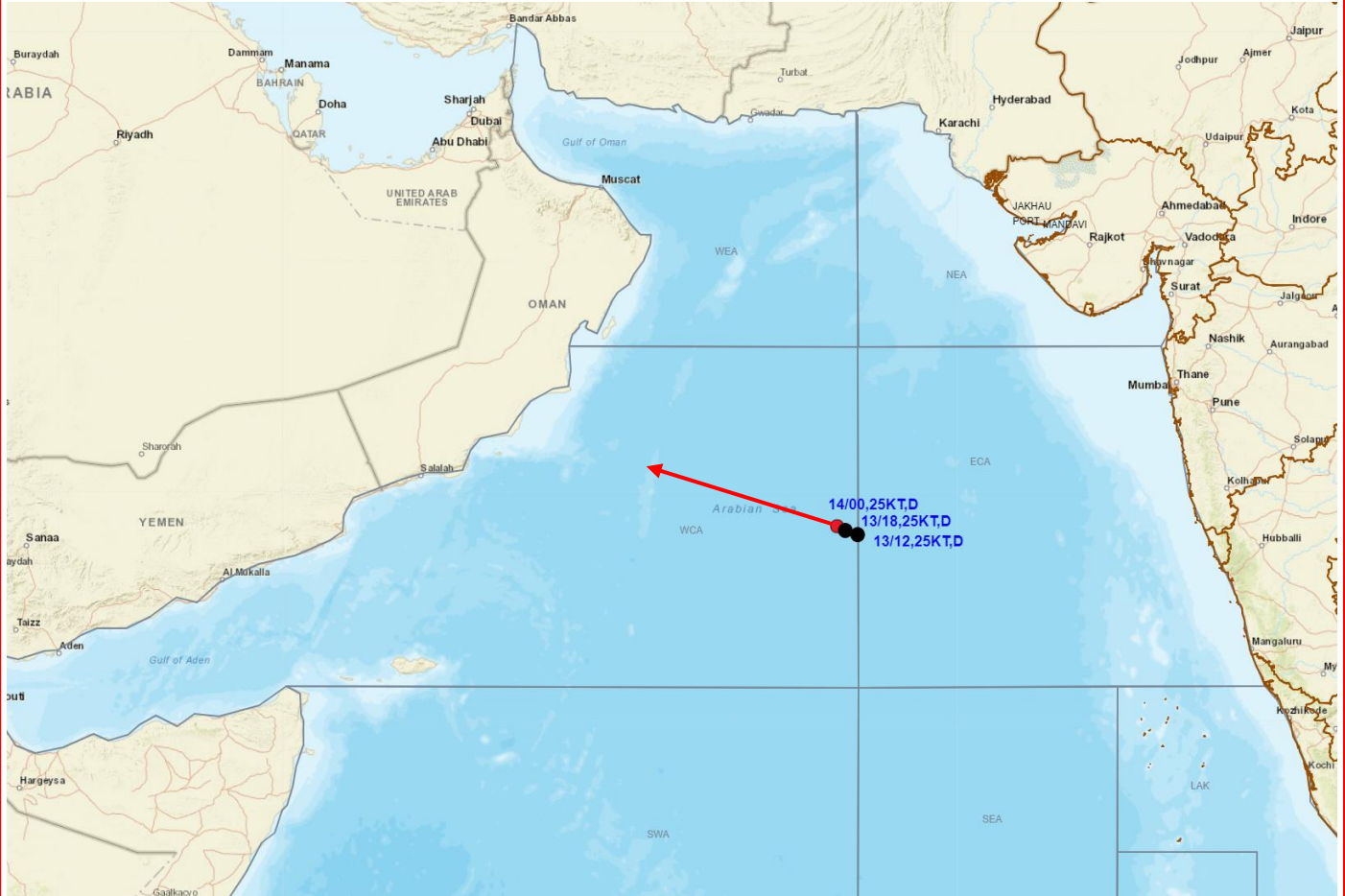
(Dr. Shashi Kant)
Scientist-D, RSMC & IMD, New Delhi

Copy to: ACWC Kolkata/ACWC Mumbai/ACWC Chennai/CWC Ahmedabad/CWC Bhubaneswar/CWC Vishakhapatnam CWC, Thiruvananthapuram/ MC, Goa





OBSERVED AND FORECAST TRACK OF DEPRESSION OVER CENTRAL ARABIAN SEA BASED ON 0000 UTC OF 14th OCTOBER, 2024



DATE/TIME IN UTC

IST=UTC + 0530

L: LOW PRESSURE AREA

WML: WELL MARKED LOW PRESSURE AREA

D: DEPRESSION (17-27 KT)

DD: DEEP DEPRESSION (28-33 KT)

CS: CYCLONIC STORM (34-47 KT)

SCS: SEVERE CYCLONIC STORM (48-63KT)

VSCS: VERY SEVERE CYCLONIC STORM (64-89 KT)

ESCS: EXTREMELY SEVERE CYCLONIC STORM (90-119 KT)

SuCS: SUPER CYCLONIC STORM (\geq 120 KT)



LESS THAN 34 KT



34.47 KT



\geq 48 KT



OBSERVED TRACK



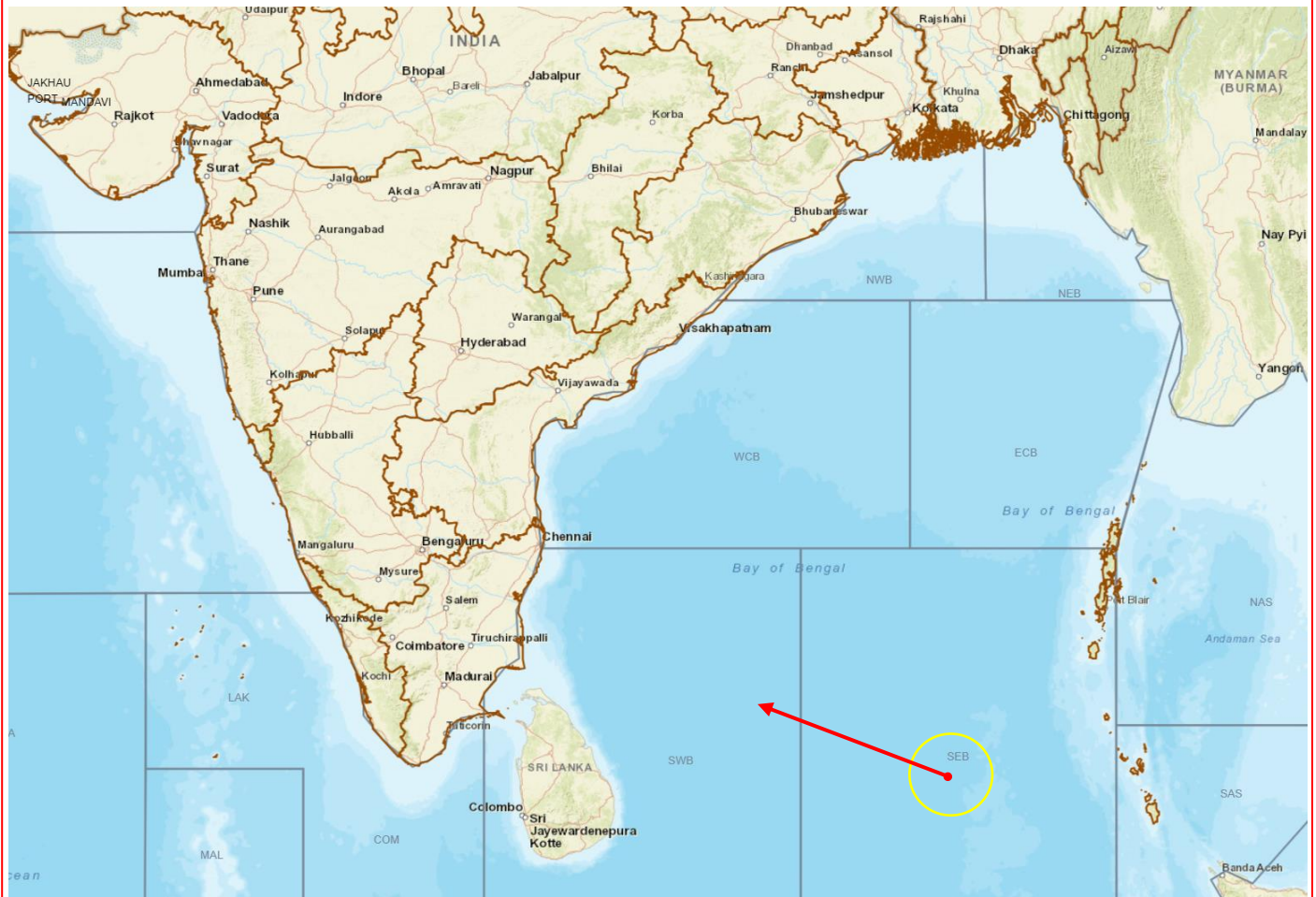
FORECAST TRACK



CONE OF UNCERTAINTY

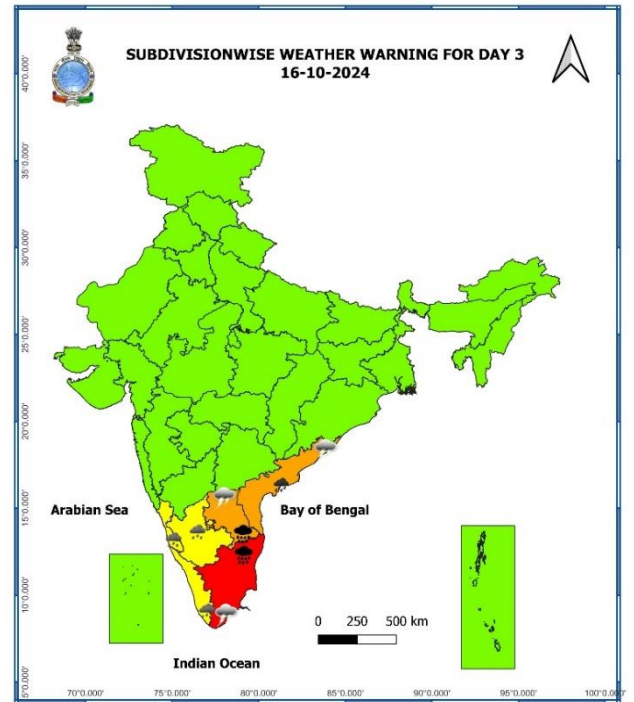
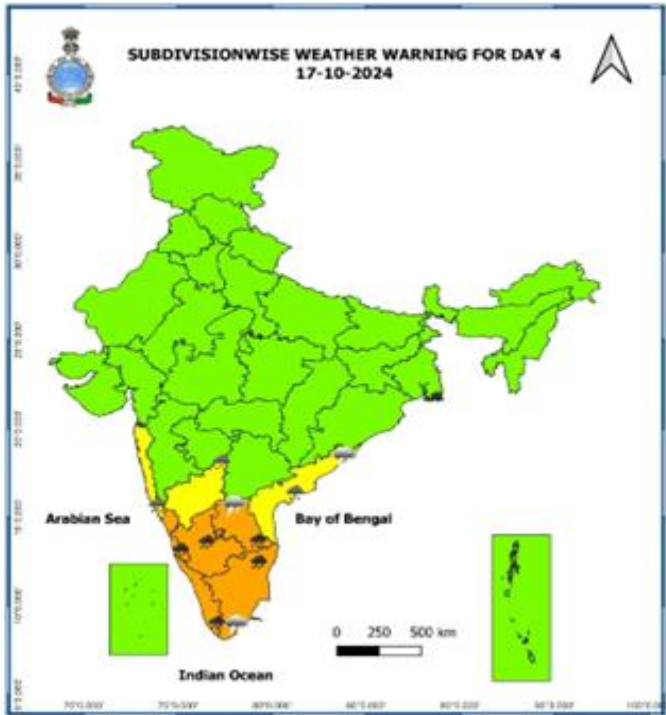
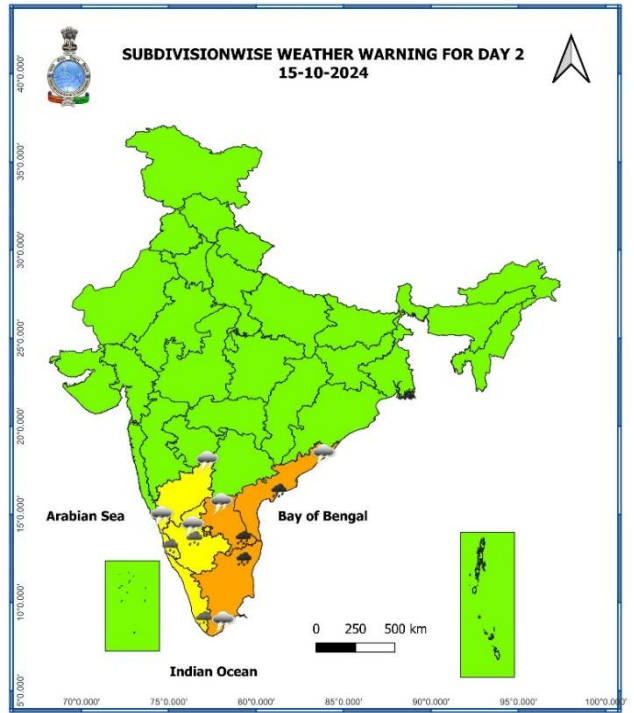
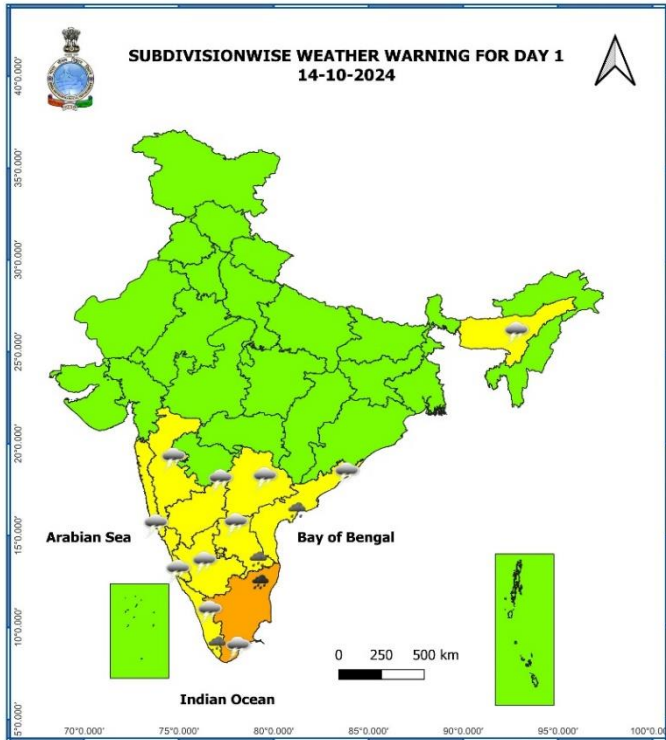


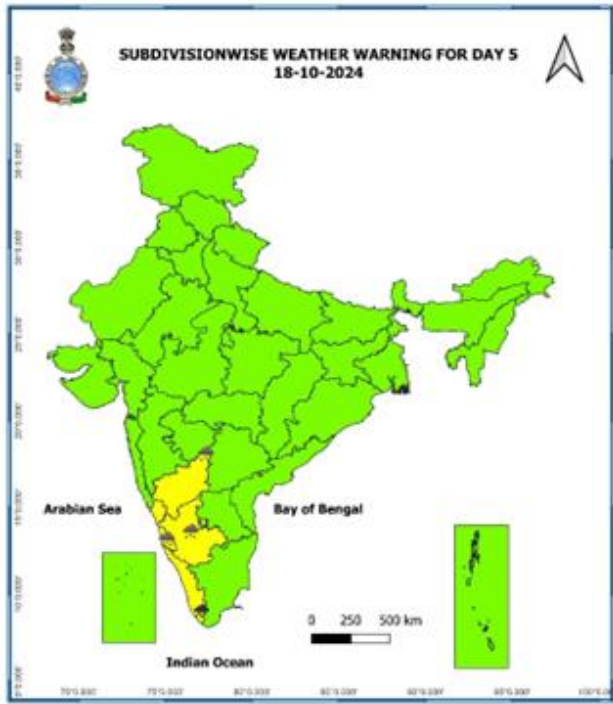
LOW PRESSURE AREA OVER SOUTHEAST BAY OF BENGAL BASED ON 0000 UTC OF 14th OCTOBER, 2024



DATE/TIME IN UTC
IST=UTC + 0530
L: LOW PRESSURE AREA
WML: WELL MARKED LOW PRESSURE AREA
D: DEPRESSION (17-27 KT)
DD: DEEP DEPRESSION (28-33 KT)
CS: CYCLONIC STORM (34-47 KT)
SCS: SEVERE CYCLONIC STORM (48-63KT)
VSCS: VERY SEVERE CYCLONIC STORM (64-89 KT)
ESCS: EXTREMELY SEVERE CYCLONIC STORM (90-119 KT)
SuCS: SUPER CYCLONIC STORM (≥ 120 KT)

- LESS THAN 34 KT**
- 34-47 KT**
- ≥ 48 KT**
- OBSERVED TRACK**
- FORECAST TRACK**
- CONE OF UNCERTAINTY**





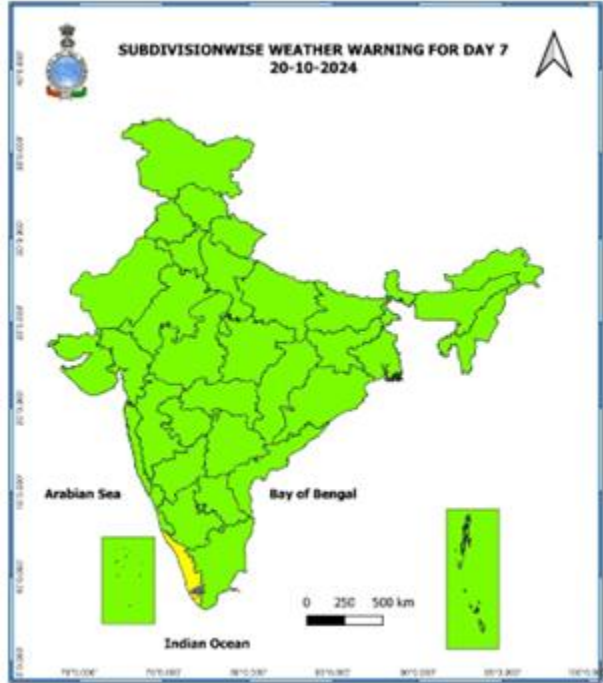
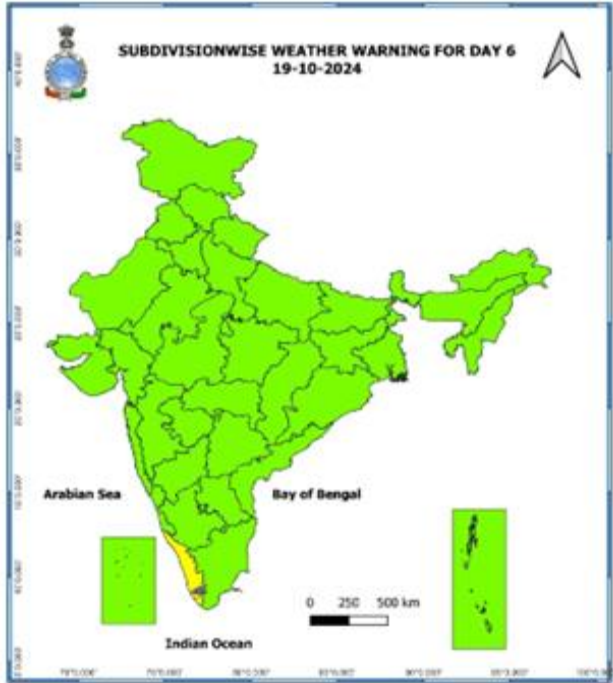
- Fog
- Heavy Rain
- Very Heavy Rain
- Extremely Heavy Rain
- Thunder & Lightning
- Hailstorm
- Dust Raising Winds
- Heavy Snow
- Dust Storm
- Heat Wave
- Warm Night
- Hot Day
- Hot & Humid
- Cold Wave
- Cold Day
- Ground Frost
- Strong Surface Winds

COLOUR CODED WARNING

- No Warning (No Action)
- Watch (Be Aware)
- Alert (Be Prepared To Take Action)
- Warning (Take Action)

Probabilistic Forecast

Terms	Probability of Occurrence (%)
Unlikely	< 25
Likely	25 - 50
Very Likely	50 - 75
Most Likely	> 75



Fishermen Warning Graphics

